



# M/V DAMAS VICTORY

ANCHOR HANDLING / TUG / SUPPLY

## Characteristics

Vessel Type	AHTS (Anchor Handling/ Tug / Supply Vessel)
Hull No.	107
Year of Built	1973
Builder	Mangone Shipping Company
Place of Built	Houston, USA
Flag	Nigeria
Port of Registry	Lagos
Operator	Damas
Call Sign	5NYU
Class	ABS
Imo No.	7235874

## Dimensions

Length Overall	51.68 M
Breadth	11.68 M
Gross Tonnage	651 Tons
Net Tonnage	276 Tons
Summer Draft	4.20 Tons
Light Draught	2.60 M

## Main Engines and Propellers

Main Engine	2 x EMD 16 Cylinder, Model 16-645-E5
BHP	2 x 2875, Total = 5750
Fuel Oil Consumption	Service Speed (7-8 Knots) - 8184 Letter / Day
Lube Oil Consumption	57 Letters / Day
Propellers	2 x Fixed Pitch Propellers
Bow Thruster	1 x Bow Thrusters, 230 HP

## Deck Space / Tank Capacity

DWT	606 Tons
Clear Deck Dimensions	30 m x 9 m (270 m)
Deck Cargo Capacity	500 Tons
Deck Strength	2.0 Tons / m
Diesel Oil	350 m Pumping Rate 50m /Hr.
Fresh Water	400 M Pumping Rate 50m /Hr.
Dirty Oil	8.5 M

## Accommodation

Vessel Crew Cabin	8
Visitors / Passenger	21

## Mess and Recreation Room

Galley	Galley Facilities Equipped to Serve Up To 35 Passengers
Mess room	2 x mess room

## Cold Stores

Walk in Chiller	300 Cu. Ft
Walk in Freezer	300 Cu. Ft

## Air Handling Unit

2 Units of A/C, One on each deck

## Medical Locker

1 Medical Locker Equipped as Per IMO Standard



# M/V DAMAS VICTORY

## ANCHOR HANDLING / TUG / SUPPLY VESSEL

### Auxiliary Generators

Auxiliary Generators	2 Generators with GM Engines
Electrical Power Supply	2 x 125 Kw, Total 250 Kw. 240 V, 60 Hz
Fuel Consumption	300 Letters / Day

### Towing Anchoring / Winch

Towing Winch	Smatco, Serial No.0-284, Double Drum, Diesel Engine Driven, Brake Load 156 T, Line Pull 125 T.
Towing Drum Specification	Towing Drum, Wire Capacity 1000m X 52mm Dia.
SWL	42 Tons
Bollard Pull	50 Tons
Towing Wire	Length 700m, DIA 50mm
Anchor Handling Wire	Length 100m, DIA 32mm
Stern Roller	Length 6.10m, DIA 1.5m
Tugger Winch	SWL 8 Tones
Shark Jaw	200 Tons
Towing Pins	200 Tons

### Safety Equipment

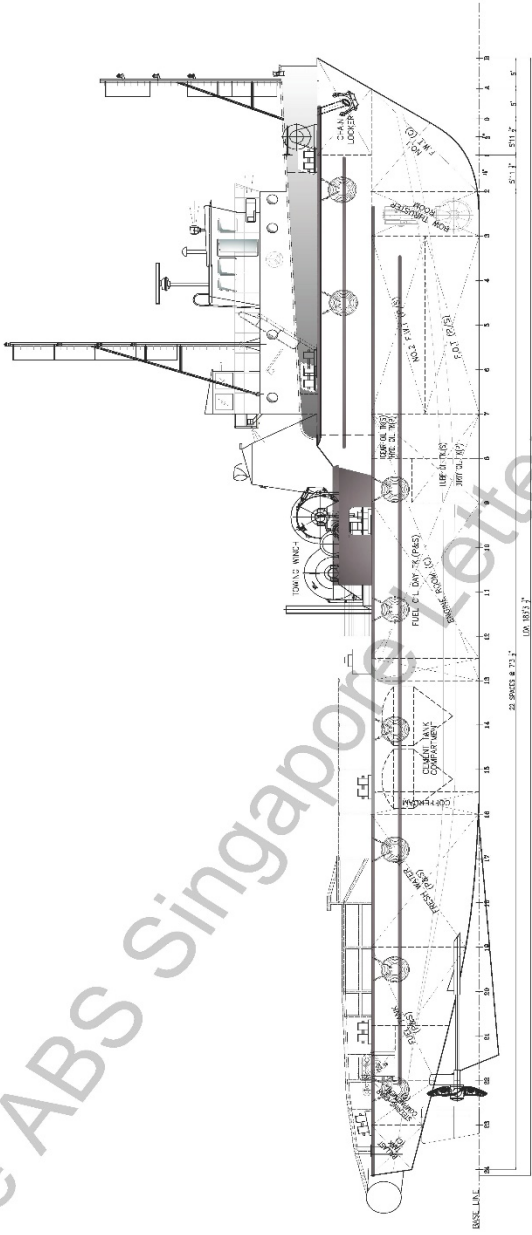
Life Rafts	2 x Life Rafts 20 x Persons Each.
Life Buoys	2 x Pcs with Light & Smoke Signal 2 x Pcs with Light Signal 2 x Pcs With 30m Line. (Total 8 Pcs.)
Life Jackets	34 Pieces
Fire Pumps & Hoses	1 x Fire Pump 6 x Fire Box Complete with Hoses and Dual-Purpose Nozzles.
Fire Extinguishers	13 Pcs Fire Extinguishers, 1 Unit of Fixed CO2 Containing 10 Bottles
Other FFA	1 Pc Fire Wallet, 2 Fire Alarms, 2 Fireman's Outfit, 4 Elsa, 24 Smoke Detectors, 1 Fire Axe.

### Bridge Equipment

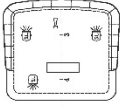
Communication Equipment	1 x SSB Radios 2 x VHF Radio 1 x Inm-C 3 x GMDSS Portable Radios.
Navigational Equipment	2 x Radars 1 x Gyro Compass 1 x Magnetic Compass 1 x Auto Pilot 1 x Echo Sounder 1 x GPS 1 x AIS. 1 x Public Address System
Search & Rescue	2 x SARTs 1 x EPIRB 12 x Parachute Rockets.
Line Throwing App.	4 sets of Line Throwing Appliances.
Emergency Power	1 x Unit for GMDSS 1 x Unit for Emergency Lightings in Accommodation.
Computer & Printer	1 x Set Computer with Printer

### Damas Oil & Marine Services Limited

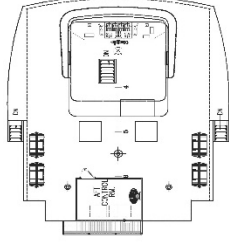
# GENERAL ARRANGEMENT PLAN - DAMAS VICTORY



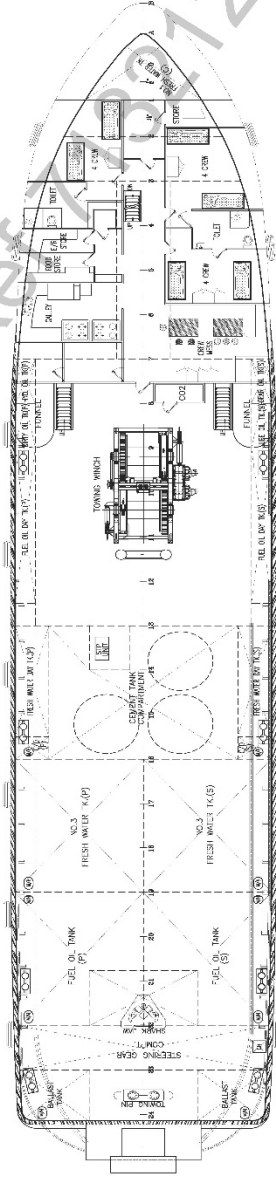
PROFILE



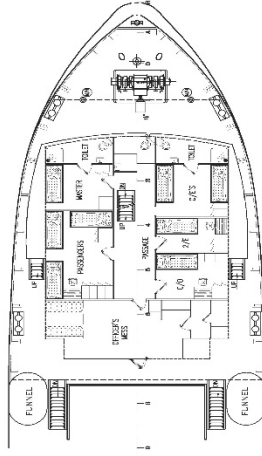
WHEEL HOUSE TOP



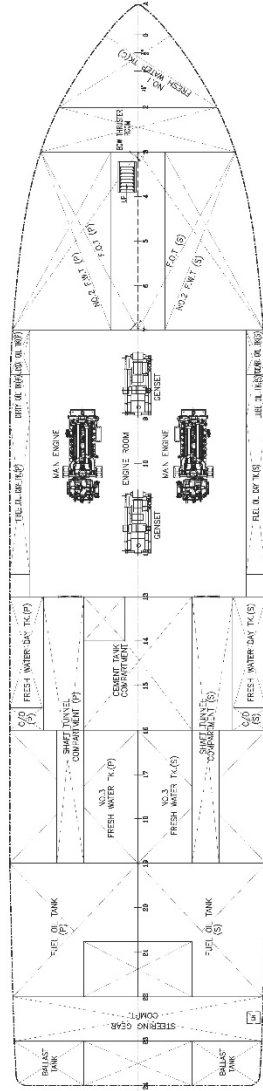
BRIDGE DECK



MAIN DECK



FORECASTLE DECK



BELOW MAIN DECK

## MAIN PARTICULARS

LENGTH (O.A)	: 55.88 m
LENGTH (MLD)	: 51.9819 m
BREADTH (MLD)	: 11.5824 m
DEPTH (MLD)	: 4.8768 m
DRAUGHT (MLD)	: 2.957 m
SUMMER DRAFT	: 4.2 m
LIGHT DRAFT	: 2.6 m

NOT REVIEWED  
Acknowledged for Record  
Only

## DAMAS VICTORY

DESIGN NO.	1016/09	METAL ISSUE	-	AA
REV.	01	REVISIONS	REVISED BY APPROVED	
<p>REVISIONS</p> <p>ARIES MARINE &amp; ENGG. SERVICES                  101, ROYAL ROAD, SINGAPORE 118961                  TEL: 65 6771 0018, 65 6771 0019, 65 6771 0020, 65 6771 0021                  FAX: 65 6771 0017, 65 6771 0018, 65 6771 0019, 65 6771 0020, 65 6771 0021                  EMAIL: ariesmarine@ariesmarine.com.sg, ariesmarine@ariesmarine.com</p>				
<p>GENERAL ARRANGEMENT</p> <p>(AS BUILT)</p> <p>SHIP NAME: DAMAS VICTORY    DATE: 30.12.10    DWG. NO.: 1016/09/201</p> <p>DESIGNER: ARIES MARINE &amp; ENGG. SERVICES    JOB NO.: EY7384    SHEET: 01 OF 01</p> <p>CHECKED BY: AA    SCALE: 1:125    REV: 03    SHEET: 01</p>				

See ABS Singapore Letter Ref: 2012 Dated 28-11-12